



PIPEWORK PREFABRICATION & WELDING SPECIALISTS



INNOVATIVE AND FORWARD THINKING – MAKING USE OF THE LATEST TECHNOLOGY AND INNOVATION

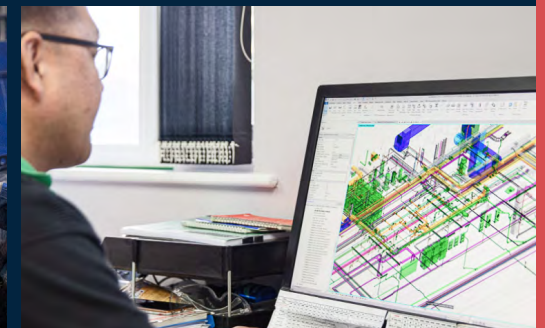
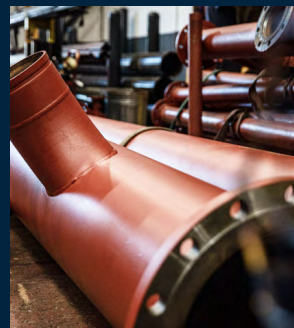
OVER FIFTY YEARS IN THE BUSINESS

Abbey Pipework has successfully worked on many of the UK's most prestigious and complex construction projects. We are happy to take on all size jobs from one off hand drawn spools to CAD drawn multi million-pound projects.

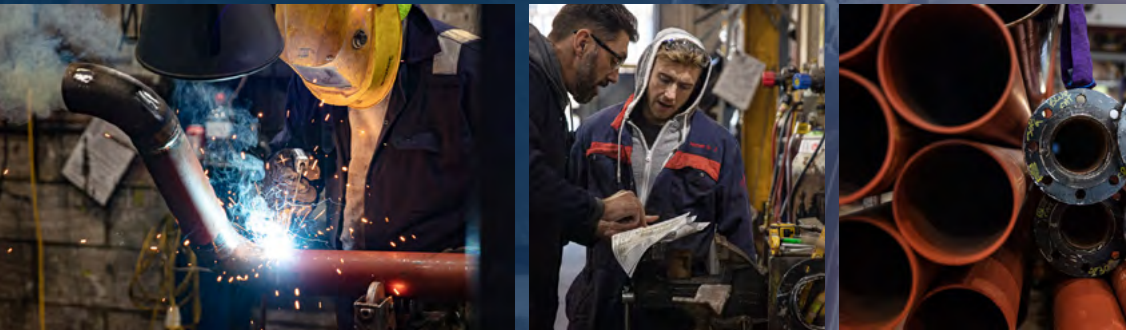
With our experienced and fully trained workforce, the quality and punctuality of our work has given us a positive reputation in the industry that you can trust.

We have a vision towards the future and are making use of innovative and forward-thinking technology to suit your needs.

We can't be beaten on project delivery and product quality.



PREFABRICATION



WE ARE A PREFABRICATION COMPANY THAT WORKS IN ASSOCIATION WITH PROJECT INSTALLERS

We purely specialise in offsite prefabricated mild steel pipework providing spool drawings to aid in your installation of the pipework projects. We welcome all enquiries from general spool pieces to complete packages and refits. Our work allows for rapid onsite installation, saving you time and costs.

Our sister company, Abbey Stainless Pipework, specialise in the fabrication of stainless steel. Working with all sizes of stainless steel, we fabricate thin wall, ISO, and Shd 10 through to Shd 80 in all grades of stainless.



OUR CAPABILITIES

WE WORK ON THE FOLLOWING

- ✓ Data Centres
- ✓ Oil Pipework
- ✓ Plantrooms
- ✓ MTHW
- ✓ Steam Pipework
- ✓ Risers
- ✓ Energy Centers
- ✓ CHW
- ✓ Diesel Pipework
- ✓ LTHW
- ✓ Jacketed Pipework

All paint colour or galvanise is finished per client specification.

WE PRIDE OURSELVES ON OUR QUALITY AND SPEED OF DELIVERY TO SITES

Abbey Pipework is capable of undertaking all projects from individual spools and risers to plant rooms and Data centres. And what's more, we pride ourselves on our quality and speed of delivery to sites AND we guarantee to meet agreed delivery dates.

As part of the pipework fabrication package, we can also offer at the clients request, post weld inspection and all aspects of quality assurance.



MATERIAL

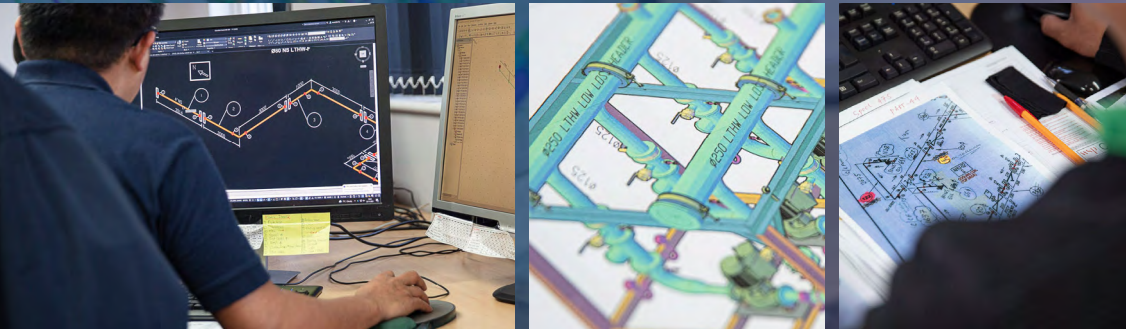


WE CARRY OVER £1½ MILLION OF STOCK AT OUR OWN FACILITIES

This enables us to commence works on any size project without reliance of regional stockists. This keeps projects on budget and on time. We constantly replenish our stocks from reputable suppliers from within the UK.



CAD DESIGN & ESTIMATING



USING THE LATEST TECHNOLOGY TO PRODUCE DETAILED ISOMETRIC DRAWINGS

Using our clients tender/construction drawings, we are able to quickly price projects & convert into working spool drawings for manufacture.

Abbey Pipework Fabricators continually invests in the latest technology to enable our technicians to produce detailed prefabrication isometric drawings from client's information. We accept Hand Sketches as well as 2D, 3D, CAD, REVIT, DWG etc.

Isometric views clearly show all pipe and fittings fully dimensioned, for fast easy site installation. Concise isometric drawings give total job control. The isometric perspective gives a clear picture of how the finished job will look. They cover full weld traceability – once pipework is fabricated the drawings can be marked with the welder's ID. Any on-site Non-Destructive Testing and Materials Testing undertaken can also be marked. Isometric drawings can then form part of a Quality Assurance package.



ESTIMATING AND CAD DRAWING SERVICE

Working from General Arrangement drawings, pipeline surveys, mechanical flow sheets, spool drawings or simple hand sketches, Abbey Pipework Fabricators provides free facility and pipeline project cost estimates.

We can estimate on a labour only basis or labour and all materials. We can also draw up schedules of rates for ongoing projects.

All estimates are guaranteed for 30 days. Our schedule of rates is available on request.



LOGISTICS



WE PROVIDE RAPID DELIVERY SERVICES ACROSS THE UK

Based just 20 minutes from the M25, our fleet of vehicles travel in and out of London on a daily basis. Abbey Pipework Fabricators has Fleet Operator Recognition Scheme (FORS) Silver level accreditation. This programme aims to raise the level of quality within fleet operations.

We feel it is of vital importance to demonstrate we are achieving exemplary levels of best practice in safety, efficiency, and environmental protection.



22,000 SQ. FT OF ADVANCED WORKSHOPS IN BASILDON, ESSEX

✓ 4x4 Tonne Overhead Cranes ✓ 15 Welding Bays

WE OFFER PIPEWORK OF THE HIGHEST STANDARD, WHILE MAINTAINING SUPERB FACILITIES WITH THE LATEST TECHNOLOGY

We work with all sizes of Mild and Stainless Steel, up to 900mm, and we hold large quantities of stock at all times. This enables us to commence commissioned works immediately, with quick response times and no delays caused by waiting for delivery of tube and fittings.

We offer an in-house NDT facility and all projects can be fully weld mapped. Our rigorous processes ensure all our fabrications are fully traceable, from construction in our workshops, through to on-site installation.



Abbey Pipework Fabricators produces workmanship of an outstanding quality.

Following a strict H&S regime, our workers are trained and dedicated to ensure we continue to impress to the highest possible standard.



QUALITY ASSURANCE

ABBEY PIPEWORK FABRICATORS HAS AN ENVIABLE REPUTATION FOR QUALITY AND SERVICE

Abbey Pipework has an enviable reputation for quality and service. No job is too large or too small. We are committed to delivering a quality product and service on time, every time. This is accomplished through the strict adherence and conformance to a rigid Quality Assurance programme.

Each project undertaken is weld mapped at the customers request for full company monitoring and traceability of all fabrication information. Dependent upon client needs, a certain percentage of Non-Destructive Testing (NDT), is implemented throughout each project. NDT allows traceability to ascertain which qualified welder was assigned to certain welds, and clear recognition to which welds have undertaken any NDT.

Our welders are qualified to BS EN 9606-1 and weld procedures are qualified to BS EN 15614-1. They are capable of welding Class 1 & Class 2 Welds.



OUR PROJECTS / CONTRACTS

SOME OF OUR MOST PRESTIGIOUS AND COMPLEX PROJECTS / CONTRACTS

Abbey Pipework has a wealth of experience in offsite pre-fabricated pipework. We have proven credentials and skills to deliver the highest quality services in today's market, producing mild steel pre-fabricated pipework from small spools, headers and plantrooms, to a number of larger projects for some of today's leading construction companies within the UK.

Our customer base has grown significantly over the past few years, due to the quality of service we provide. We have built an excellent reputation over the 51 years of trading based on our accuracy, quality, reliability, and efficiency, and are a preferred supplier within the industry. Please call **01268 526723** or email info@abbeyfab.co.uk to find out more.



SEE PROJECT EXAMPLES ON FOLLOWING PAGES >>>



OUR PROJECTS / CONTRACTS *continued*



Tottenham Hotspur Football Stadium

Building summary:

With a capacity of over 62,000, the Tottenham Hotspur stadium is the third largest football stadium in the UK. Not only does the stadium cater for thousands of football fans each year, it's also capable of hosting National Football League matches, concerts and other top-end events.

The construction works for the modern stadium began in 2016 and was completed in 2019. Abbey Pipework Fabricators were happy to supply our services towards the £1 billion project.

What we provided:

We provided the building with low temperature hot water (LTHW), chilled water (CHW) and gas pipes in 2½"NB to 12"NB.



The Shard

Building summary:

Standing at 310m tall, the Shard is the tallest skyscraper in the UK. With 95 storeys, the building provides breathtaking views across London and is home to some of the most high-end offices, restaurants and hotel rooms of the city.

The building construction began in March 2009 and officially completed in November 2012. Abbey Pipework Fabricators were thrilled to be a part of such a large project.

What we provided:

We supplied The Shard with low temperature hot water (LTHW) and chilled water (CHW) pipework in 2½"NB to 16"NB.



AstraZeneca, Cambridge

Building summary:

The pharmaceutical company, AstraZeneca, began building their global research and development (R&D) facility in Cambridge in 2015. Also home to the company's corporate headquarters, the building was constructed to improve its productivity and biopharmaceutical innovation.

Covering approximately 11 acres of land, the construction works took just over two years to complete and has been pronounced as the company's largest centre for oncology research.

What we provided:

Abbey Pipework Fabricators provided the site with ½" to 20"NB in low temperature hot water (LTHW), chilled water (CHW), gas, steam, and condensate pipework for three separate companies. Complete shell and core.



OUR PROJECTS / CONTRACTS *continued*



NHS

Addenbrooke's Hospital

Building summary:

Originally built in 1766, the hospital based in Cambridge is known worldwide for its research and teaching. After years of continuous growth, they recently introduced Hybrid Endovascular Aneurism Repair (EVAR) operating theatres to improve the lives of people suffering with vascular disease.

What we provided:

Along with the two new EVAR theatres, the staff changing rooms and hospital storage areas also needed remodelling. Abbey Pipework Fabricators supplied 2½"NB to 12"NB in low temperature hot water (LTHW) and chilled water (CHW) for the main facility and energy centre.



Facebook

Building summary:

Facebook wanted to bring an essence of San Francisco to their London offices based in Rathbone Square. Their staff and visitors can now experience areas of wellness and nature, similar to their Silicon Valley HQ.

Construction for the modern offices began in 2015 and the new premises is said to house the largest Facebook engineering team outside of the US.

What we provided:

Abbey Pipework Fabricators were happy to supply the London offices with 2½"NB to 6"NB in low temperature hot water (LTHW), chilled water (CHW) and gas pipework for three separate companies.



AWE Aldermaston

Building summary:

AWE has supported the UK Government's Ministry of Defence for more than 70 years now. Their Aldermaston location covers approximately 750 acres and was once home to a wartime airfield. Now, it's a centre for advanced research, design, and manufacturing facilities.

What we provided:

Abbey Pipework Fabricators supplied the Berkshire building with 1½"NB to 4"NB in low temperature hot water (LTHW) and chilled water (CHW).

OUR PROJECTS / CONTRACTS *continued*



Tate Modern

Building summary:

In 1996, the iconic London art gallery was transformed from the Bankside Power Station. Since then, it's been home to some of the most iconic art exhibitions. In recent years, Tate Modern needed new dry air coolers and we were extremely happy to provide our services for them.

What we provided:

Abbey Pipework Fabricators supplied the iconic London art gallery with 4"NB to 8"NB in low temperature hot water (LTHW) and chilled water (CHW).



Battersea Power Station

Building summary:

Since being built in 1921, the building was famous for supplying electricity to a fifth of the city of London. In 2022, the building transformed in a major redevelopment. Battersea Power Station is now home to a new, iconic venue for people to shop, eat and drink.

What we provided:

We provided the power station with 2"NB to 10"NB in low temperature hot water (LTHW), chilled water (CHW) and gas pipework on various parts of the site for various contractors.



Heathrow Airport

Building summary:

Since its official opening in 1946, Heathrow Airport sees on average around 80 million passengers per year. Abbey Pipework Fabricators started working with the airport in 2014 and our works are still ongoing. We are pleased to have provided pipework for Terminals 1, 2, 3, and 4.

What we provided:

Abbey Pipework Fabricators provided Heathrow with 2"NB to 14"NB in low temperature hot water (LTHW), chilled water (CHW) and medium temperature hot water (MTHW).

OUR PROJECTS / CONTRACTS *continued*



Gatwick Airport

Building summary:

In 1950, Gatwick was announced as London's second airport. Since then, it has seen hundreds of millions of passengers flying to and from the UK. Since 2016, Abbey Pipework Fabricators have provided pipework for various areas of the airport including the main baggage hall.

What we provided:

We provided Gatwick Airport with 2"NB to 10"NB in low temperature hot water (LTHW), chilled water (CHW) and medium temperature hot water (MTHW).



Houses of Parliament

Building summary:

Originally built in 1099, this historic landmark served as England's largest hall at the time. Over hundreds of years, it has undergone many reconstructions and is now part of London's many landmarks, with thousands of tourists visiting each year.

What we provided:

Abbey Pipework Fabricators were pleased to provide our services to the historic building. This included 2"NB to 8"NB in low temperature hot water (LTHW), chilled water (CHW), medium temperature hot water (MTHW), and oil pipework.



Ten Trinity Square, Four Seasons Hotel

Building summary:

Built in 1922, the former Port Authority building is now home to Four Seasons Hotel London at Ten Trinity Square. Ten Trinity Square was purchased by Reignwood, a Chinese investment company, in 2010 and was restored with a deep respect for London's culture and history.

What we provided:

Abbey Pipework Fabricators provided 2½"NB to 12"NB in low temperature hot water (LTHW), chilled water (CHW) and gas pipework. Complete shell and core.

OUR PROJECTS / CONTRACTS *continued*



TN2 and LD10 Data Centres

Building summary:

TN2 is an 11 storey bespoke Data Centre, standing at 65.9m tall, with switch rooms, battery rooms, a plant room and service corridors covering approximately 1,130m².

The London Data Centres had major refurbishments, with electrical infrastructure, a water mist system, a sprinkler system, and cooling systems implemented.

What we provided:

We provided the data centres with 2"NB to 12"NB in low temperature hot water (LTHW), and chilled water (CHW) for the cooling systems. Complete shell and core.



Johnson Matthey

Building summary:

Johnson Matthey began construction of a new refinery building on the site of their existing building in Royston, Hertfordshire in 2019.

The works included interior fit-out and new building enabling works, as well as the main refinery building itself. The 3rd Century precious metals Refinery (3CR) project was the result of JM's push to improve the efficiency, safety and sustainability of their refining processes.

What we provided:

Abbey Pipework began working with the site in early 2020 providing mild steel prefabricated pipework of 2½"NB to 10"NB in low temperature hot water (LTHW), chilled water (CHW) and steam pipework. Complete shell and core.



RAF Bases and Barracks, UK

Building summary:

We were happy to provide pre-fabrication works for St George's Barracks in Rutland, Marne Barracks in Catterick, and RAF bases in Wittering and Marham. We carried out various work across these locations, including off site fabrication to ensure time spent on site was kept to a minimum, and installing pipework below and above the ground.

What we provided:

Abbey Pipework Fabricators provided 2"NB to 12"NB in low temperature hot water (LTHW), medium temperature hot water (MTHW), chilled water (CHW), gas, steam, and oil pipework.

OUR PROJECTS / CONTRACTS *continued*



Honeywell Aerospace

Building summary:

Since 1946, the Honeywell Aerospace site in Yeovil has been a pivotal part of the Aerospace industry.

The 171,000 square feet factory specialises in control and data systems, life support systems, environmental control systems, and more. Their systems are used on a large range of defence and civilian aircrafts.

What we provided:

Abbey Pipework have carried out various works for the factory including 2"NB to 14"NB in chilled water (CHW), low temperature hot water (LTHW), medium temperature hot water (MTHW), gas, and steam prefabricated pipework.

OTHER COMPLETED PROJECTS / CONTRACTS

- | | | |
|-----------------------------|-----------------------------|----------------------------------|
| ✓ 20 Fenchurch Street | ✓ Chessington | ✓ Olympia |
| ✓ 30 St Mary Axe | ✓ Citigen EON | ✓ Ongar Leisure Centre |
| ✓ 122 Leadenhall Street | ✓ City University | ✓ Riverside Ice & Leisure Centre |
| ✓ Anglia Ruskin University | ✓ Colchester Academy | ✓ Shard Place |
| ✓ AZ Project | ✓ Euston Station | ✓ Sizewell B |
| ✓ Battersea Power Station | ✓ Felsted School | ✓ St Pancras |
| ✓ Bishopsgate | ✓ Gatwick | ✓ Telecity |
| ✓ Bloomberg | ✓ Great Baddow Fire Station | ✓ Telehouse |
| ✓ Bougues Data Centre | ✓ Harlow Fire Station | ✓ The Place |
| ✓ Brentwood School | ✓ Heathrow | ✓ Tower Bridge |
| ✓ British Museum | ✓ Hertford University | ✓ Uni of Bedfordshire |
| ✓ BT Data Centre | ✓ House of Parliament | ✓ Uni of Birmingham |
| ✓ Buckingham Palace | ✓ Johnson Matthey | ✓ Uni of Northampton |
| ✓ Cambridge University | ✓ Keele University | ✓ University of Nottingham |
| ✓ Camden Hotel, Kings Cross | ✓ Maldon Fire Station | ✓ Victoria Station |
| ✓ Canada House | ✓ MOD Farnborough | ✓ White City Place |
| ✓ Castledone School | ✓ New US London Embassy | |
| ✓ Chelsea Barracks | ✓ Nottingham City Hospital | |



CONTACT US


LET'S WORK TOGETHER

01268 526723

REQUEST A QUOTE

 **Abbey Pipework Fabricators Limited**

Unit 8, Herons Court, Cranes Farm Road
Basildon, Essex SS14 3DF

 info@abbeyfab.co.uk

www.pipeworkfabricators.com

